

Fuel Tank Containment Sump

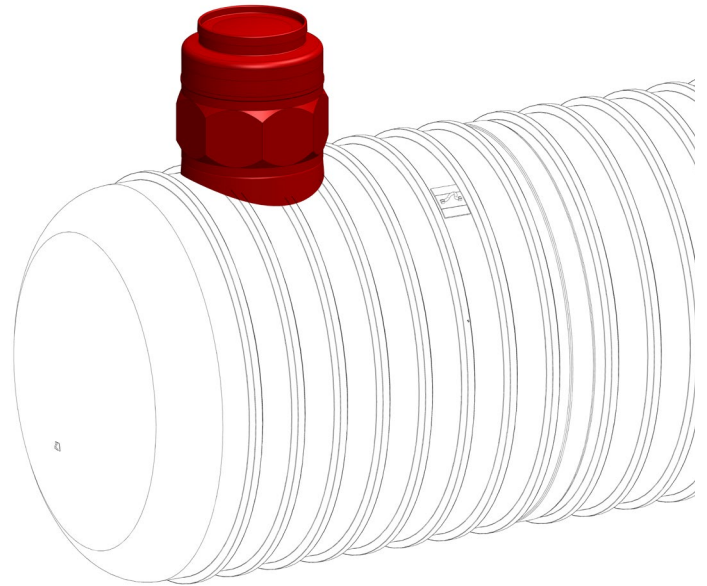
Fiberglass containment sumps have major advantages over other materials

When stored liquids are corrosive - like fuel products – the material choice matters for containment sumps as much as for tanks. Fiberglass sumps provide the same maintenance-free reliable containment that Xerxes tanks do.

Containment sumps serve two purposes in fuel tank installations: as a reliable enclosure for fittings and equipment – such as piping and pumps – and for secure containment of leaks should they occur.

Why choose a Xerxes sump?

- Backed by decades of proven installation
- Built to the same standards as Xerxes fuel tanks
- Designed and manufactured for precise fit on Xerxes tank containment collars
- Available for deep burials (over 7 feet)
- Delivered with tanks so no delay in installation



Adhesive and laminate field-bonding options for any type of installation

Xerxes containment sumps are available with two types of joints for field bonding:

- U-channel adhesive-bonded joint for single-wall sumps for burial up to 7 feet
- Fiberglass-laminated joint for all deep burial applications of single-wall sumps, and for all double-wall sump installations

Key Features

Corrosion-resistant fiberglass

Wide range of sizes & covers

Single-wall & double-wall models

Hydrostatic & dry monitoring for double-wall sumps

Compatible with **current generation fuels**

Designed for **easy installation**

Maintenance-free over life of the tank

New & retrofit installations

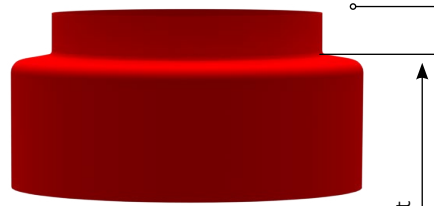


Fuel Tank Containment Sump

Containment Sump Components

SUMP TOP

- Single-wall & double-wall models
- Diameters: 42", 48", 54"
- Height: 12", 24", 36", 48", 60"



SUMP COVER & TOP OPTIONS

See chart below

FLAT-SIDED SUMP BODY

- Single-wall & double-wall models
- U-channel adhesive & fiberglass-laminated models
- Diameters: 42", 48", 54"
- Height: 24"



Height



NOTE

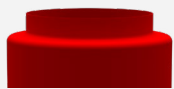
The sump heights – ranging between 36" and 84" – are determined by adding the full height of the sump body and the height of the sump top up to the place where the sump top indents for the opening.

CONTAINMENT COLLAR

- Single-wall & double-wall models
- U-channel adhesive & fiberglass-laminated models
- Diameters: 42", 48", 54"



Cover Options	Single-Wall & Double-Wall Bonding Options											
	Single-Wall Containment Sump Adhesive-Bonded Joint				Single-Wall Containment Sumps Laminated Joint				Double-Wall Containment Sumps Laminated Joint			
	30"	32"	36"	38"	30"	32"	36"	38"	30"	32"	36"	38"
 LEVER-LOCK COVER	X				X				X			
 WATERTIGHT COVER		X	X	X	X	X	X		X	X	X	



OPEN TOP
No Cover

In some installations, the sump top will not have a cover and is installed with an open top. This option is available for sump top opening diameters of 32 inches, 36 inches, 37.25 inches and 38 inches.

For over 45 years, Xerxes has designed and manufactured fiberglass underground storage tanks for fuel, water and wastewater. Xerxes' most recent expansion is its HydroChain™ stormwater product line — highly engineered products with site-specific designs for stormwater management solutions. Xerxes is a key brand of Mattr, a global materials technology company serving critical infrastructure markets.